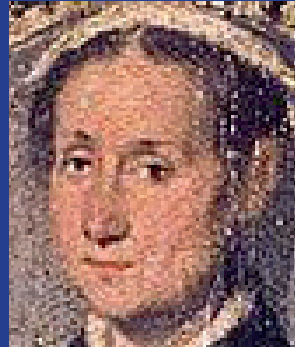
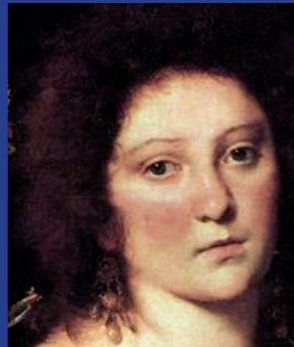
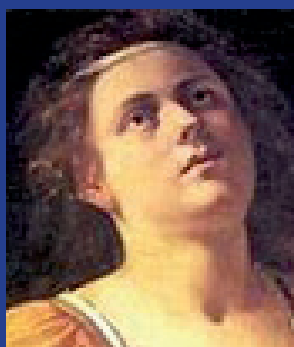


The Philharmonic Society of Arlington Presents  
The Arlington-Belmont Chorale and Chamber Chorus  
**Through the Glass Ceiling:  
Six Centuries of Choral Music  
by Female Composers**

Barry Singer, Music Director  
Michael Becker, Accompanist

Sarah Telford, Assistant Chorale Director  
Special guest artists: Semiosis Quartet  
Music by

Maddalena Casulana, Vittoria Aleotti, Isabella Leonarda, Barbara Strozzi, Fanny Hensel,  
Clara Schumann, Amy Beach, Mabel Daniels, Gwyneth Walker, and Karen Tarlow,  
And the Premiere of a newly commissioned work by Adria Stolk, *Voyage*.



**Sunday, March 11, 2018, 3:30pm**

First Parish Unitarian-Universalist Church  
630 Massachusetts Avenue, Arlington, MA

Admission: \$15 - Seniors/Students: \$10 - Children 12 and under: \$5

Wheelchair Accessible

For information visit: [www.psarlington.org](http://www.psarlington.org)



This program is supported in part  
by a grant from the Arlington  
Cultural Council, a local agency  
which is supported by the Mass  
Cultural Council, a state agency.